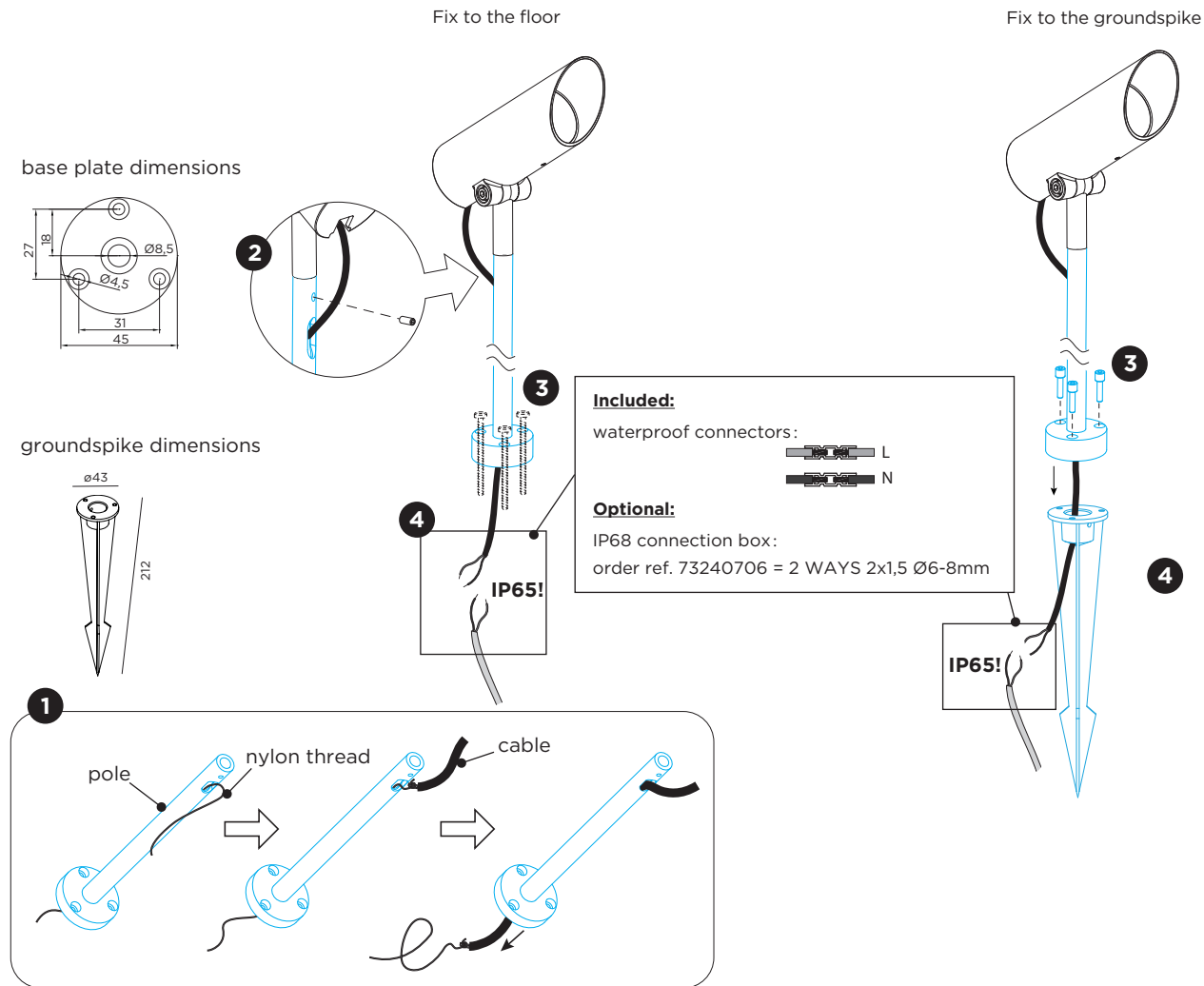
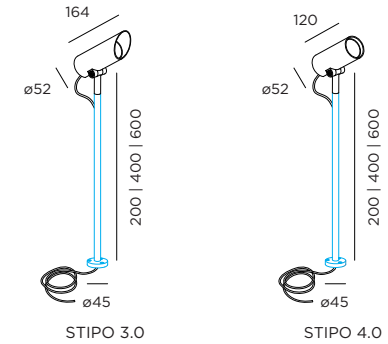


STIPO 3.0 / 4.0

INSTALLATION INSTRUCTIONS | APRIL 2022



DIMENSIONS



MOUNTING INSTRUCTION

- 1 Guide the luminaire cable through the pole. There is a nylon thread attached in the pole, that is an auxiliary tool to help the user to pull the cable through the pole.
- 2 Fix the luminaire and the pole together with a screw.
- 3 Fix the pole base to the ground with screws (screws are not included).

OPTIONAL

Fix the pole base to the groundspike with screws (screws are included in the packaging of the spike).

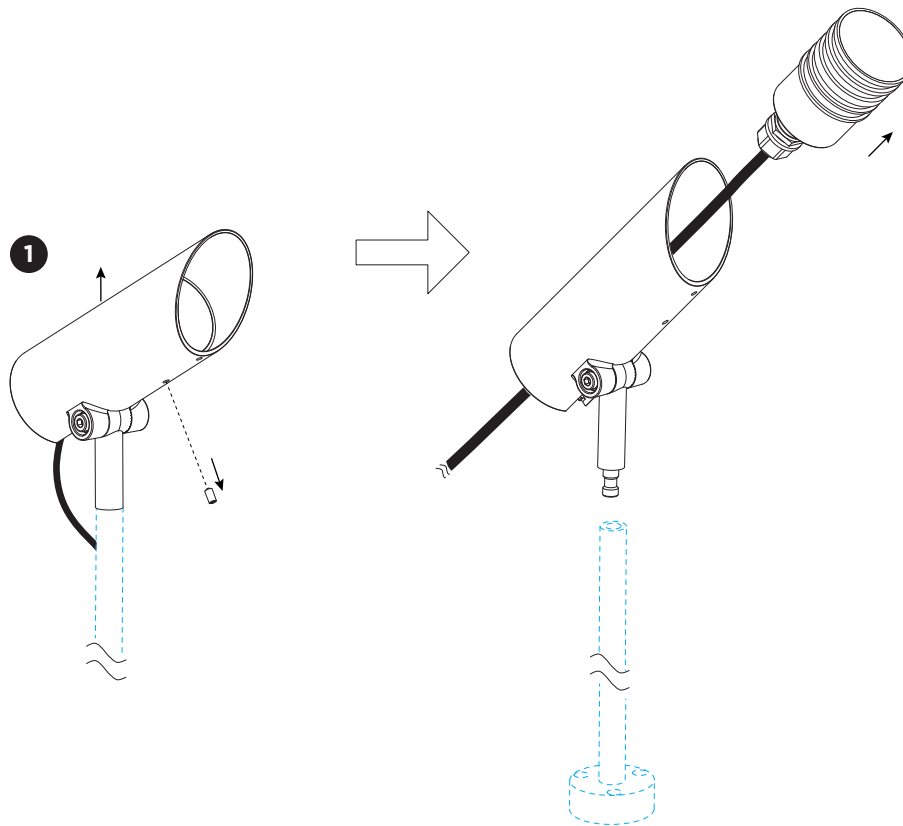
POWER CONNECTION

- 4 Connect to 220-240V. Connect the wires with the waterproof connectors. Please see the detail method in the separate instruction sheet of waterproof connection. Make sure to use a waterproof connection with the same IP rating as the luminaire.

PB19-010-776-00_v0

STIPO 3.0 / 4.0

INSTALLATION INSTRUCTIONS | APRIL 2022

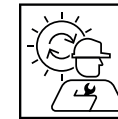


DISMOUNTING INSTRUCTION

Light source

- 1 Loosen the screw and remove the LED engine from the pole by pushing the cable into the bollard.

Note: before replacement please tie a new wire or nylon fiber on the cable end before pulling it out of the pole. So this wire or nylon fiber can be used to pull in the new cable into the pole.



To replace the light source please contact your Wever & Ducré customer service contact point.



This luminaire contains a light source with the energy class F.