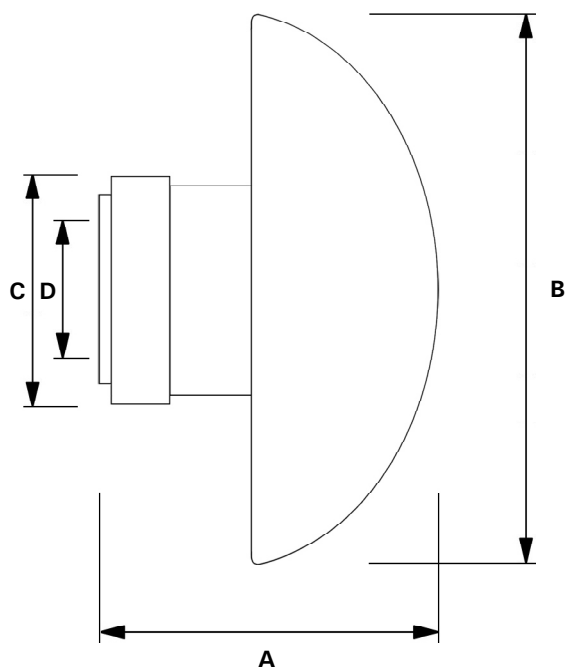
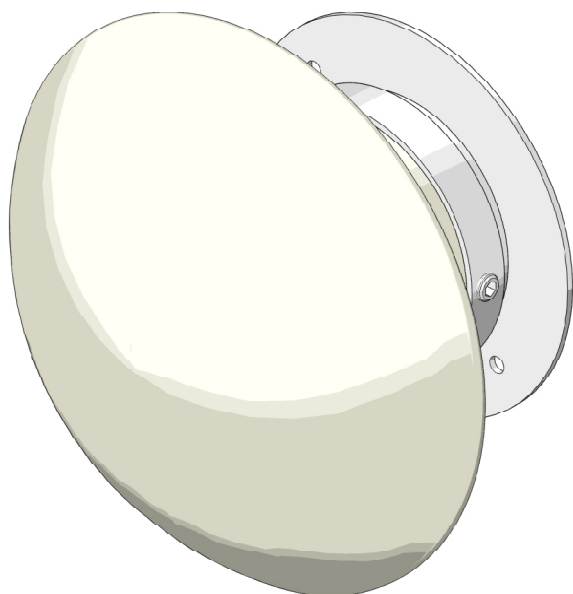


Piero Castiglioni, 1988



CODE	VOLTAGE	BULB	DIMENSIONS IN CM
2775/2G	12V	1x20W max G4 (HA)	A: 6 - B: 9 - C: 4,5 - D: 2,5
2775/5G	12V	1x35W max GY6,35 (HA)	A: 7 - B: 12 - C: 4,5 - D: 2,5

CAUTION!

Use a 120V 60 Hz transformer for the 20 watt bi-pin lamp.
Use a 120V 60 Hz transformer for the 35 watt bi-pin lamp.

WARNING

Disconnect current prior to any assembling or repair. If not familiar with electrical connections, contact a qualified electrician. Keep these instructions for future reference.



Before any operation on the fixture, please disconnect the power supply.



In case of damage to the feeding cable, please contact a FontanaArte dealer or qualified personnel for replacement.

