

# Roest /roōst/

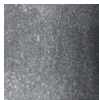
Sconce30



## Color



**Rust**  
GP2052-N



**Zinc**  
GP2053-AZ



**Carbon**  
GP2054-C

	North America	Europe
<b>Bulb</b>	2 x Max 10W LED, GU10, 120V	2 x Max 10W LED, GU10, 220-240V
<b>Color temperature</b>	2700K (recommended)	2700K (recommended)
<b>Lumen output</b>	Dependent on bulb	Dependent on bulb
<b>Cord</b>	N/A	N/A
<b>Canopy</b>	N/A	N/A
<b>Material</b>	Naturally rusted steel	Naturally rusted steel
	Zinc coated steel	Zinc coated steel
	Black coated steel	Black coated steel
<b>Size</b>	Ø 2.375, H 11.75 (in)	Ø 6, D9,5 H 30 (cm)
<b>Weight</b>	3.5lbs	1,6kg
<b>Country of origin</b>	The Netherlands	The Netherlands

**Certification**



For use in dry location. After the natural oxidation process, all items are treated to stop further rusting. The material will not come off of stain.

**Designed by VanJoost,  
The Netherlands.**

Custom cords and canopies are available. Contact our offices for more information.