



# LED Surface Mounted Spotlight Installation Instructions

Dear Users,  
Thank you for purchasing and using this product!  
To bring you the better user experience, please read user manual carefully before using this product and keep the manual for further reference.

## 1. Packing List

NO.	List Name
1	Surface Mounted Spotlight
2	Accessories incl.screw x2.expansion screw x2.screwdriver x1
3	Installation Instructions

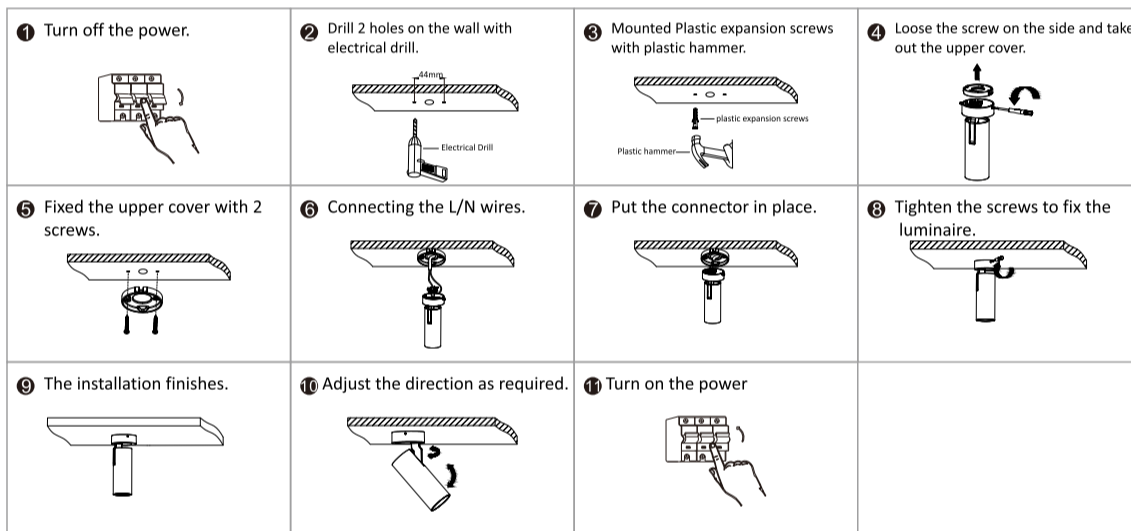
## 2. Product Specification

Item No.	Power	CCT	Beam Angle	CRI	Input Volatge	Housing Color
38013-01-HW	10W	2700K	36°	CRI90	AC200-240V 50/60Hz	White
38013-01-WW	10W	3000K	36°	CRI90	AC200-240V 50/60Hz	White
38013-02-HW	10W	2700K	36°	CRI90	AC200-240V 50/60Hz	Black
38013-02-WW	10W	3000K	36°	CRI90	AC200-240V 50/60Hz	Black

## 3. Application

It's for commercial lighting and residential lighting use.

## 4. Surface Spotlight Installation Instruction



## 5. Warning

- 5.1 Turn off the power supply before installation;
- 5.2 Follow the rated voltage on the package. Do not use it under too high or too low voltage;
- 5.3 The product must be installed by a registered electrician. Make sure the power is off and ensure personal safety before installation or replacement;
- 5.4 This product is indoor use only;
- 5.5 It is not allowed to be installed near the heat source and corrosive gas to avoid affecting the lifespan of the luminaire;
- 5.6 It's not allowed to install on the weak load-bearing ceiling;
- 5.7 It must be installed in the place without vibration, swing and fire hazard to avoid danger;
- 5.8 Please don't frequently switch on and off the luminaire to avoid affecting its lifespan;
- 5.9 If the product works abnormal (not working, flickering) , please replace the fixture by a registered electrician.

**ABSINTHE**  
Elektriciteit Paul De Meutter CV  
Industriepark 13 B - Zone B  
2220 Heist-op-den-Berg, Belgium

	料号	4.05.01.002004	类型	说明书	最后修改日期	2021.03.03	修改内容	
	尺寸	L210*W285mm	材质 / 艺	铜版纸 彩色印刷单面, 对折三次	修改人	Linda	修改版本	V1.0