

TUBE

03-Jun.-2016

2.0 LED

LED 2x8W | 220-240VAC | 50-60Hz | COB 2-step | incl. PS | phase-cut dim

CE IP65 960°C 0,9m 38° G

3000K | >80CRI | 480lm

white texture
dark grey texture
black texture

711264W4
711264D4
711264B4

2.0 PAR16

2xPAR16 max. 35W | GU10 | 220-240VAC | 50-60Hz

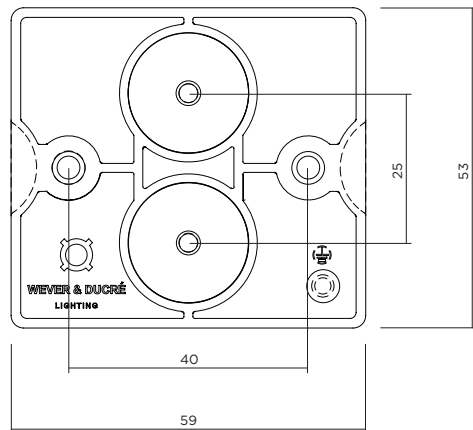
CE IP65 960°C 0,9m G

white texture
dark grey texture
black texture

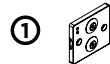
711220W0
711220D0
711220B0

OPTIONAL

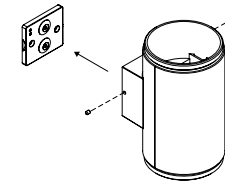
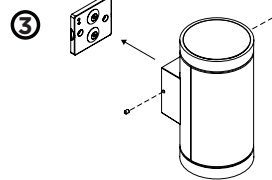
for PAR16 lamps see our catalogue



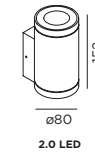
2.0 LED



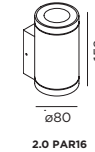
2.0 PAR16



DIMENSIONS



2.0 LED



2.0 PAR16

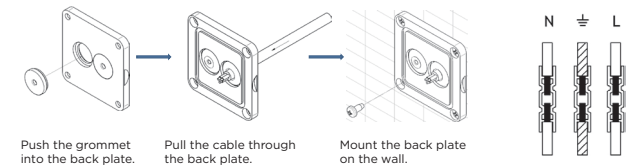
MOUNTING INSTRUCTION

- 1 Remove the backplate and fixate it to the wall with screws.

POWER CONNECTION

- 2 Exterior: WATERPROOF Connection

IP-rated connections for wall fixtures: cable isolation for round cables \varnothing 4.5-7.5 mm, should be in the grommet. For cable use \varnothing 7.0-9.5 mm: replace the grommet with the other grommet in the bag.



- 3 Fixate the fixture base to the back plate with side screws
- 4 For PAR16:
Remove the glass cover by turning it.
Insert the lamp.
Turn the glass cover back on the fixture.



WEVER & DUCRÉ
LIGHTING

www.weverducre.com

Wever & Ducre bvba Kwadestraat 153 bus 2.1 8800 Roeselare

INSTALLATION
INSTRUCTIONS