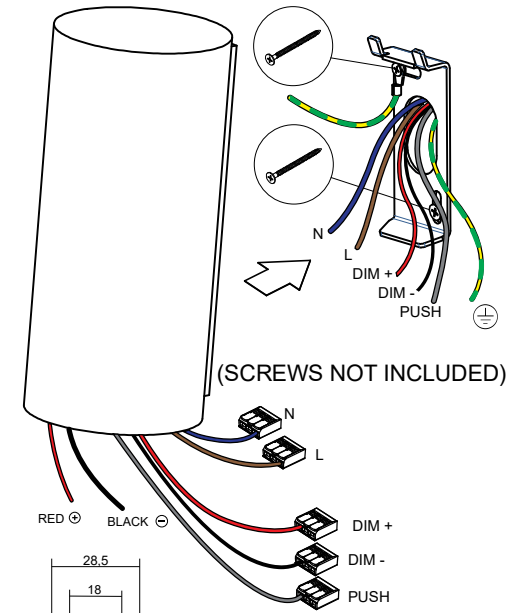
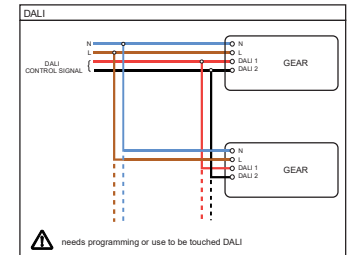
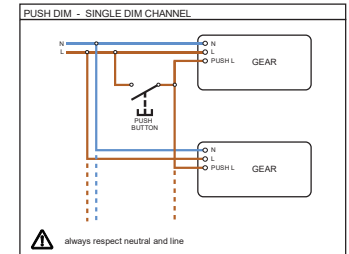
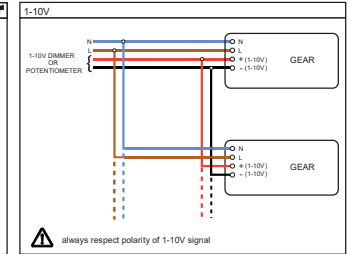
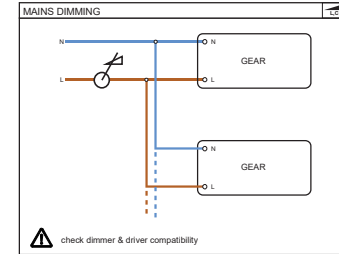
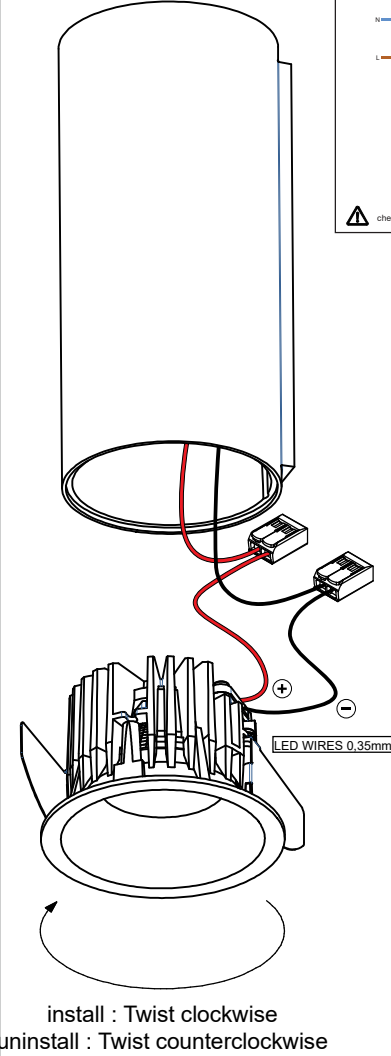
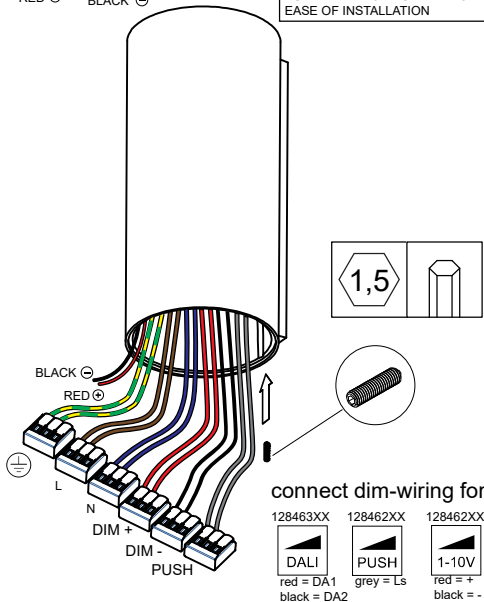
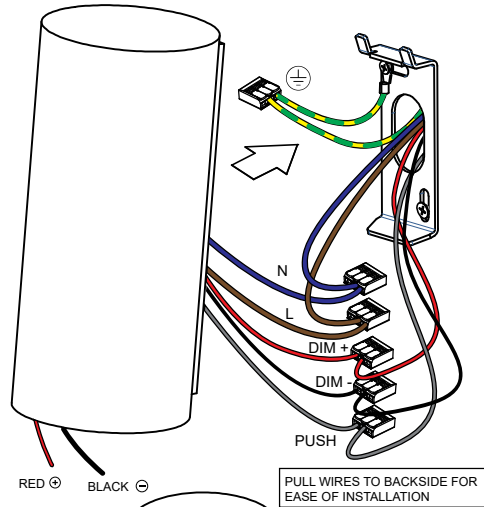
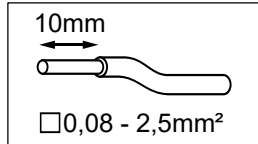
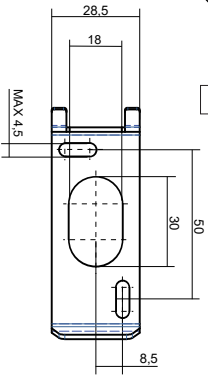


SmartST XL Wall 82 1xLED GI

128461XX _ 128462XX _ 128463XX



500mA DRIVER INCLUDED



CAN BE USED WITH:
 Smart 82 (IP*) LED GE
 Smart 82 adjustable LED GE

CAN NOT BE USED WITH:
 Smart 82 (IP) warmdim LED GE
 Smart 82 adjustable warmdim LED GE

*in combination with Smart Surface Tubed wall = IP20

⚠ The light source contained in this luminaire shall only be replaced by the manufacturer or his service agent or a similar qualified person

220-230V 50-60Hz R,C 1-10V PUSH DALI