

TUBE CARRÉ CEILING

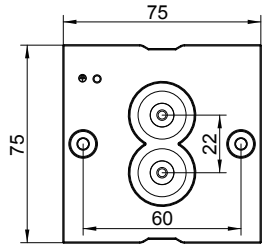
29-Aug.-2018

1.0 LED
LED 8W | 220-240VAC | 50-60Hz | COB3-step | incl. PS | phase-cut dim
 CE IP65 3000K >90 CRI 380lm
 3000K | >90 CRI | 380lm
 white texture 734264W5
 dark grey texture 734264D5
 black texture 734264B5

1.0 PAR16
 PARI6 LED max.10W | GU10 | 100-240VAC | 50-60Hz
 CE IP65
 white texture 734220W0
 dark grey texture 734220D0
 black texture 734220B0

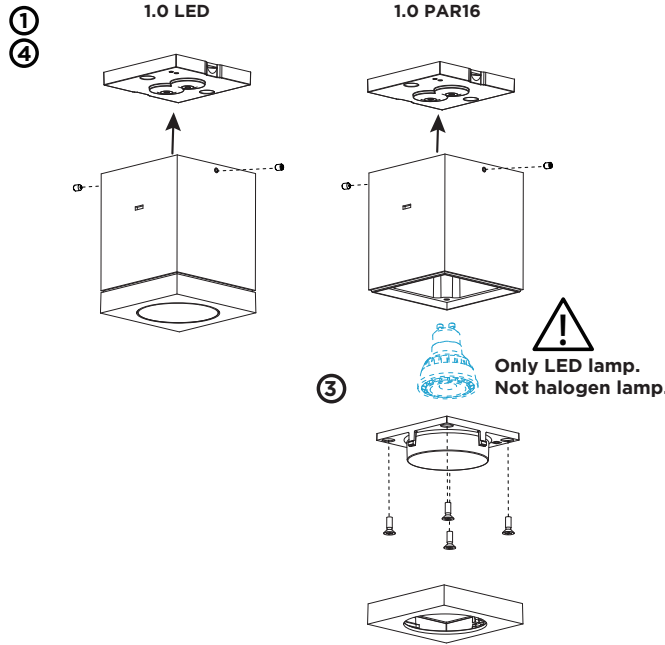
OPTIONAL: PARI6 LED GU10 6W | phase-cut dim : 2700K | 3000K | 1800-2850K

backplate:

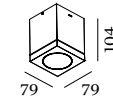


necessary for IP-rating

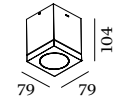
	A	B	C
CABLE			
TYPE	ROUND H05RN-F H07RN8-F H07RN-F	ROUND H05RN-F	ROUND
OUTSIDE Ø	min 6.8mm max 8.9mm	min 5mm max 6.8mm	min 1.5mm max 2.6mm
CONDUCTION SECTION	2or3x 0.75mm ² 2or3x 1.0mm ² 2or3x 1.5mm ²	2or3x 0.75mm ² 2x 1.0mm ²	0.75mm ² 1.5mm ²



DIMENSIONS



1.0 LED



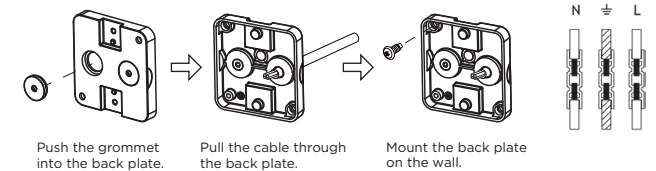
1.0 PAR16

MOUNTING INSTRUCTION

- Remove the backplate from the fixture and mount it on the ceiling with screws.

POWER CONNECTION

- Exterior: WATERPROOF Connection
 IP-rated connections for wall fixtures: cable isolation for round cables \varnothing 4.5-7.5 mm, should be in the grommet. For cable use \varnothing 7.0-9.5 mm: replace the grommet with the other grommet in the bag. Refer to overview table.



- For PAR16 version:
 - Pry the body cover to open with a straight screwdriver.
 - loosen the four screws of the glass cover and remove it.
 - Insert the lamp
 - put back the glass cover with the four screws.
 - place back the body cover by pushing to click.
- Mount the luminaire on the backplate with the allen screws.

The light source of the integrated LED is not replaceable;
 When the light source reaches its end of life the whole luminaire shall be replaced.

Caution, risk of electric shock